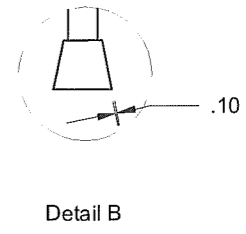
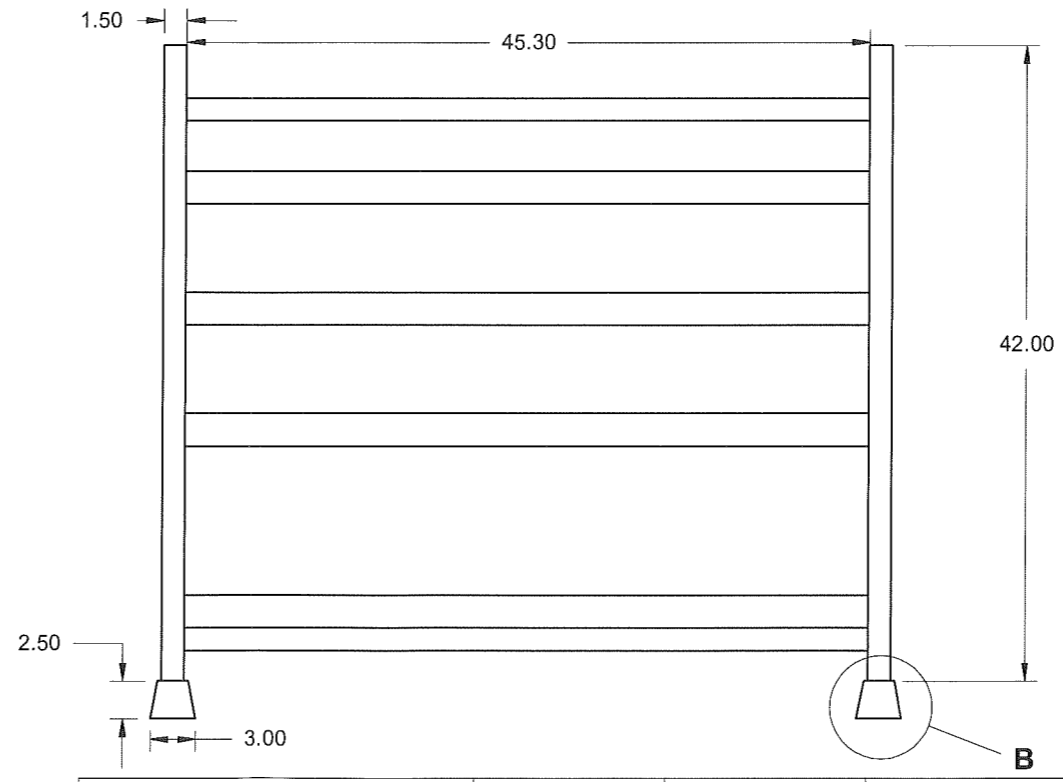
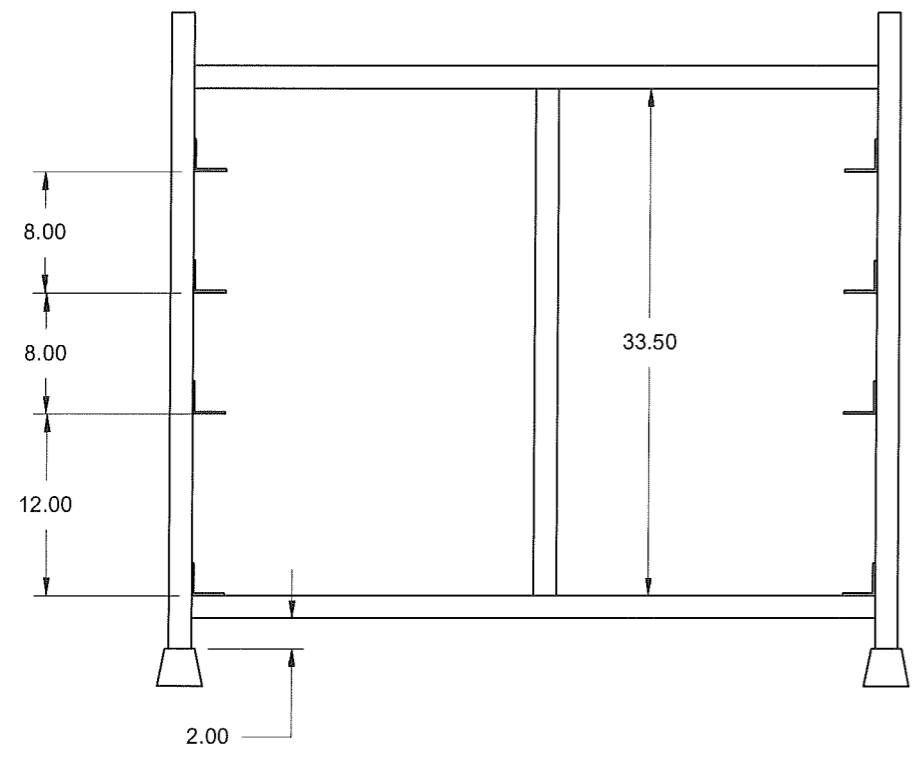
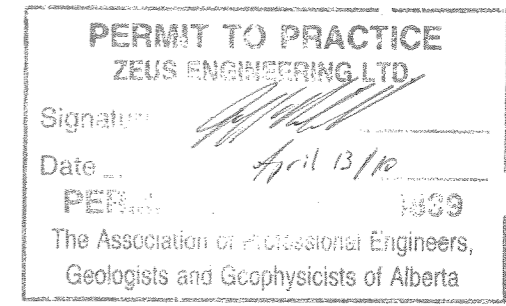
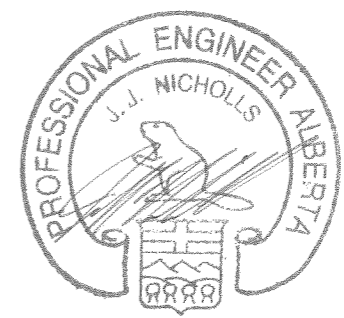


General Notes

1. All dimensions in inches.
2. Cut lengths are exact C/W Tolerance +/- 1/16".
3. Remove all sharp edges and burrs.
4. All welds to be 1/4" continuous fillet U.N.O.
5. 50% of all welds on each stand to be MPI inspected.
6. All steel to conform with CSA G40.21 GR.44W.
7. All welds will conform with CSA W59 89.
8. Ensure all spatter and loose mill scale are removed.
9. Clean all surfaces with Acetone.
10. Apply 2 coats of Dem Kote 70131 All purpose red oxide primer.
Leave 30 mins between applying coats.
Allow 8 hours to fully dry.
11. Main legs square box section steel HSS 1.5x1.5x0.188".
all other square box section steel HSS 1.5x1.5x0.125".
12. L section 2x2x0.1875".

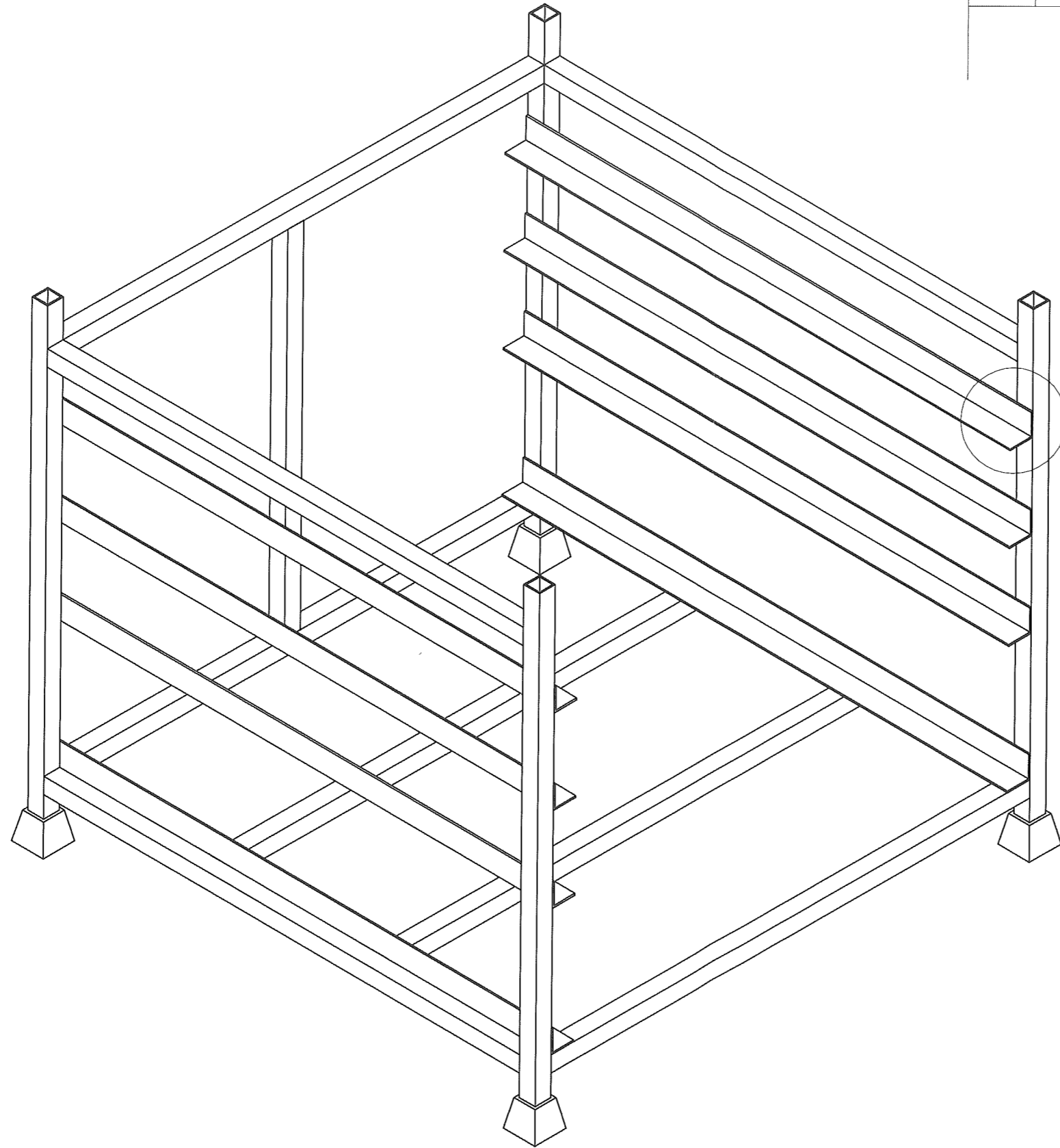
REVISIONS				
ZONE	REV	DESCRIPTION	DATE	APPROVED
	C1	Change to 4 off main legs from 1.5x1.5x0.125" box section to 1.5x1.5x0.188" box section.	13 April 10	D. Bauer
	C2	L section changed to 2x2x0.1875".	13 April 10	D. Bauer
	B1	Change to foot design.	30 Mar 10	D. Bauer



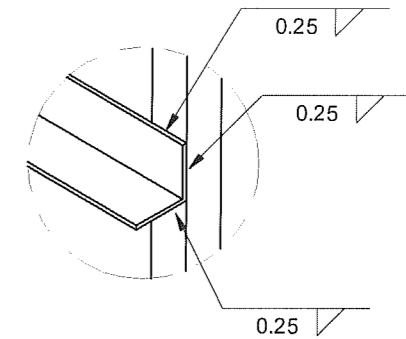
DRAWN D. Bauer	DATE 10 Mar 10	Bread Board Racking			
	CHECKED P. Nicholas				13 April 10
QA					
MFG		SIZE B	FSCM NO.	DWG NO. TCT-009	REV C
APPROVED		SCALE	1:13	SHEET	1 of 2



REVISIONS				
ZONE	REV	DESCRIPTION	DATE	APPROVED

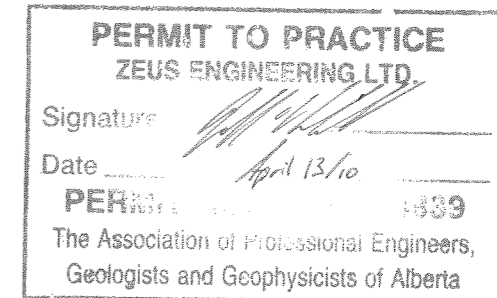
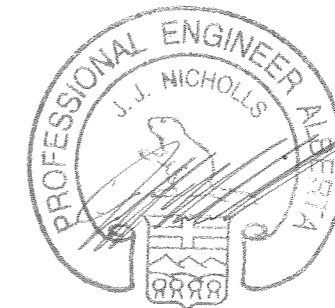


Fillet weld all three side indicated below.



Detail A

A



NOTE:

These racks can be stacked a maximum of 3 high.

Rack designed to carry 4 off bread boards (TCT -013). Rack shall be capable of carrying the maximum load of 200lbs per shelf.

SIZE B	FSCM NO.	DWG NO. TCT-009	REV C
SCALE	SHEET		2 of 2

