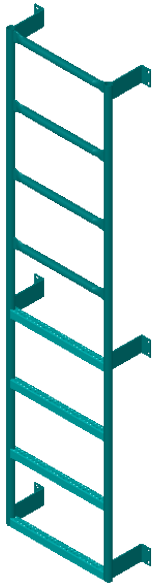




**UNITRAN**  
MANUFACTURERS LTD.

## DOCK & MEZZANINE LADDERS



LAD-S

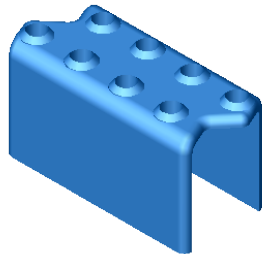
UNITRAN's easy-to-install ladders help prevent injuries by providing an easy, safer access to docks and mezzanines. Available in nineteen standard lengths, with two through twenty steps. Skid resistant, perforated, raised button "grip" treads are 1 1/4" deep and 18" wide. Sturdy, all welded, steel construction ladders are shipped complete, ready for quick, easy installation.

Powder coated standard "Unitran Safety Blue".

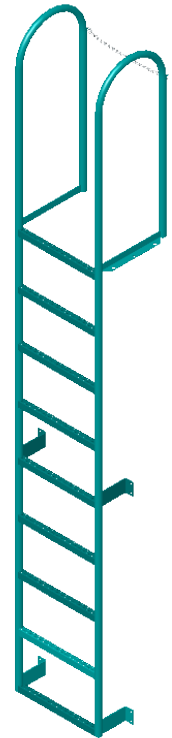
SIDE-STEP models are designed to be installed with the top tread level with the floor being served. Grab rungs continue for four feet above the top tread, for safety, as per OSHA requirements. They are designed to be mounted beside truck loading doors, to provide safer access without obstructing the door opening.

WALK-THROUGH models have the top tread flush with dock or mezzanine floor, for safety, as per OSHA requirements. Projection from wall is 6" clear.

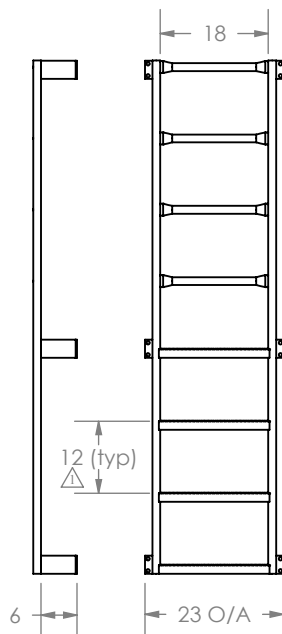
FLOOR-MOUNTS are available. Add -FM to model number and specify exact mezzanine height.



GRIP-TREAD steps are 18" wide by 1 1/4" deep by 1 1/2" high one-piece steel with self-cleaning, perforated, raised buttons for slip-resistant footing.



LAD-W



Number of Treads	Side-Step Models	Wall-mount Walk-Through	Shipping Weight
2	LAD-S-02	LAD-W-02	38 lbs.
3	LAD-S-03	LAD-W-03	42
4	LAD-S-04	LAD-W-04	46
5	LAD-S-05	LAD-W-05	49
6	LAD-S-06	LAD-W-06	53
7	LAD-S-07	LAD-W-07	71
8	LAD-S-08	LAD-W-08	76
9	LAD-S-09	LAD-W-09	81
10	LAD-S-10	LAD-W-10	86
11	LAD-S-11	LAD-W-11	91
12	LAD-S-12	LAD-W-12	103
13	LAD-S-13	LAD-W-13	108
14	LAD-S-14	LAD-W-14	113
15	LAD-S-15	LAD-W-15	118
16	LAD-S-16	LAD-W-16	123
17	LAD-S-17	LAD-W-17	128
18	LAD-S-18	LAD-W-18	133
19	LAD-S-19	LAD-W-19	138
20	LAD-S-20	LAD-W-20	143

